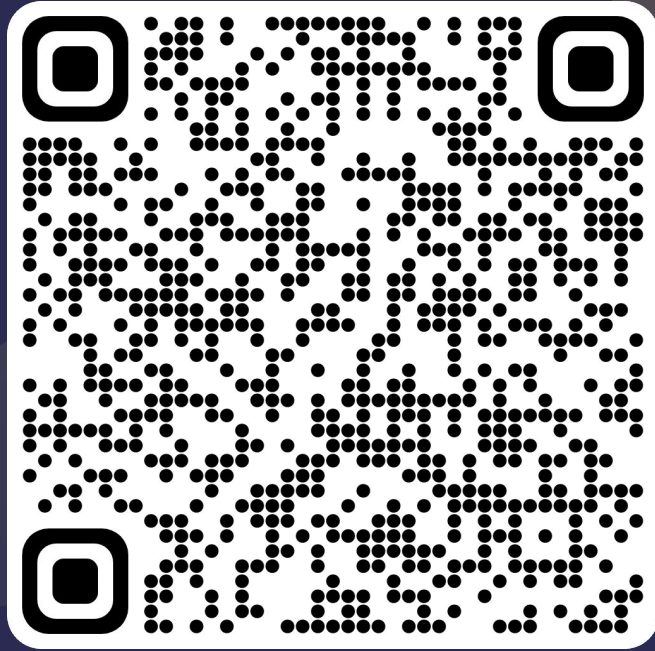


SIGN IN



A stylized illustration of a movie theater stage. The background is a dark blue screen flanked by red curtains. Two spotlights from above illuminate the center of the screen. In the foreground, there are rows of red theater seats. Two gold stanchions with white ropes are positioned on either side of the stage. The text is centered on the screen.

AMSA at UC Merced presents

MOVIE NIGHT

★ Thursday, November 30, 2023 | 6:30pm COB 116 ★

Table of Contents



**MCAT Q/
Spotlight**



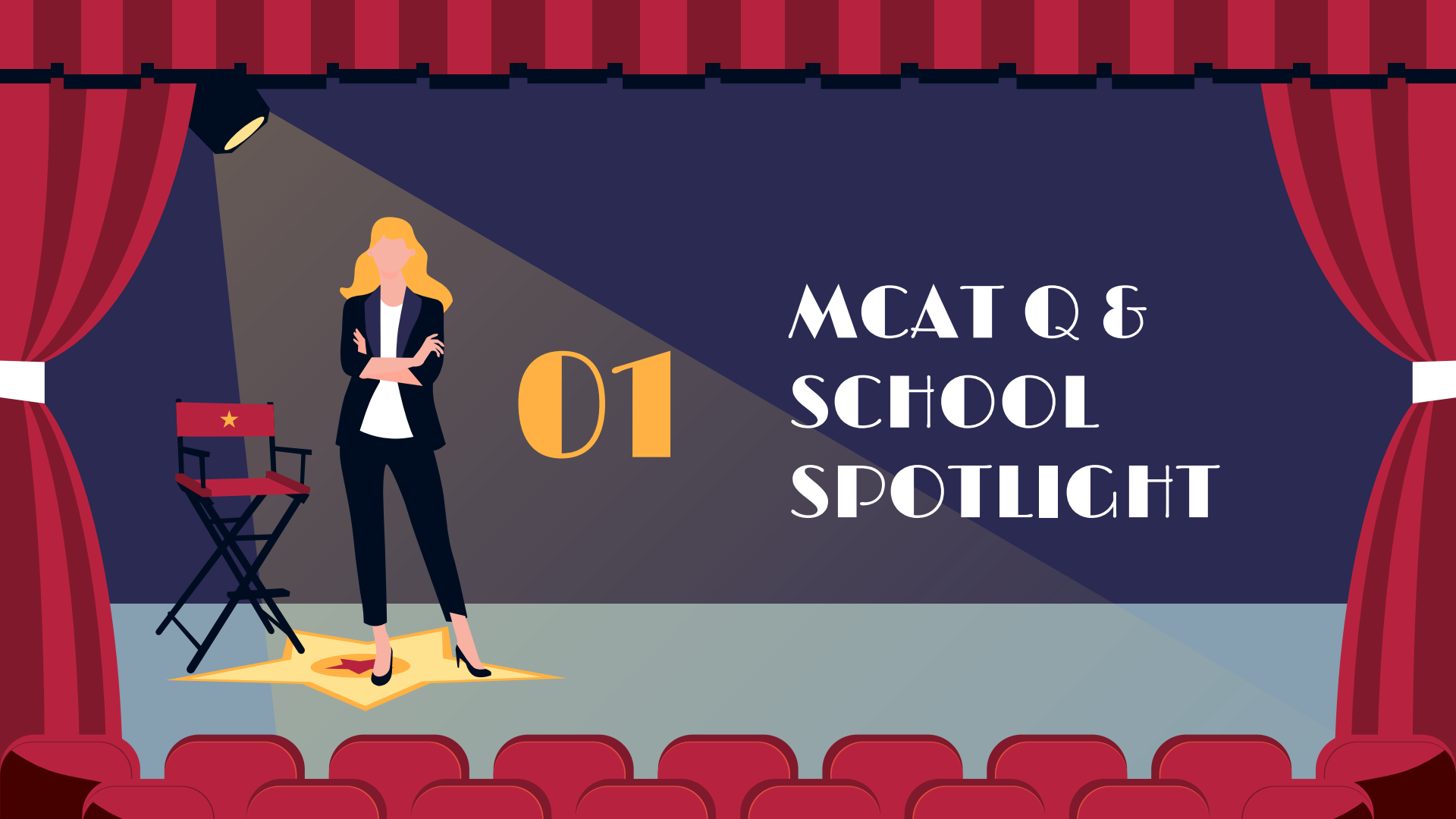
Announcements



Movie Time!



Conclusion



MCAT Q &
SCHOOL
SPOTLIGHT

01

MCAT QUESTION OF THE DAY

QUESTION:

A protein collected through affinity chromatography displays no activity even though it is found to have a high concentration using the Bradford protein assay. What best explains these findings?

- A. The Bradford reagent was prepared incorrectly.
- B. The active site is occupied by free ligand.
- C. The protein is bound to the column.
- D. The protein does not catalyze the reaction of interest.



MCAT QUESTION OF THE DAY

ANSWER:

B. The active site is occupied by free ligand.

Protein activity and concentration are generally correlated. Because we have a high concentration of protein, we expect a high activity unless the protein has been damaged or inactivated in some way. The protein could have been inactivated by experimental conditions like detergents, heat, or pH; however, these are not answer choices. Rather, we must consider how the experimental procedure works. Protein elutes off of an affinity column by binding free ligand. In this situation, the binding may not have been reversed and thus the free ligand competes for the active site of the enzyme, lowering its activity.



Med School **Spotlight**

David Geffen School of Medicine University of California, Los Angeles

How To Apply:

1. Submit your primary medical school application with AMCAS
2. Select individuals are invited to submit a secondary application
3. Select individuals are invited to interview, which will be specific to the track for which you are granted an interview
4. Offers of admission are issued on a rolling basis for the Traditional MD track and on a cohort basis for the MSTP and Prime-LA

Requirements:

- Successful applicants will have obtained a Bachelor's degree from a US or Canadian institution by completing at minimum 3 years of undergraduate coursework or have obtained a graduate degree from a US or Canadian institution.
- The median MCAT score for matriculants at UCLA is 516 and the median GPA is 3.8. However, there is no "required" MCAT score or cut-off GPA for admission into the MD program at UCLA
- Anyone who was offered admission will be considered for medical school scholarships automatically.
- Tuition/Fees: 1st Year- \$43, 843

A hand in a black suit sleeve with a white cuff is holding a white clapperboard with black diagonal stripes. The clapperboard is tilted upwards. The background is a dark blue stage with red curtains on the left and right. A spotlight beam from the bottom right illuminates the clapperboard and the text.

02

Announcements

A small black stage spotlight is positioned on the floor in the bottom right corner, casting a beam of light upwards towards the center of the stage.

Next Semester

Our decided meeting time for next semester will be

**Bi-weekly: Thursday at 6:30 -7:30
pm**

We hope to see you there!



Volunteering/Shadowing

During winter break

If there is availability during this time, we suggest reaching out and completing volunteer work, or even shadowing.





Feedback Form

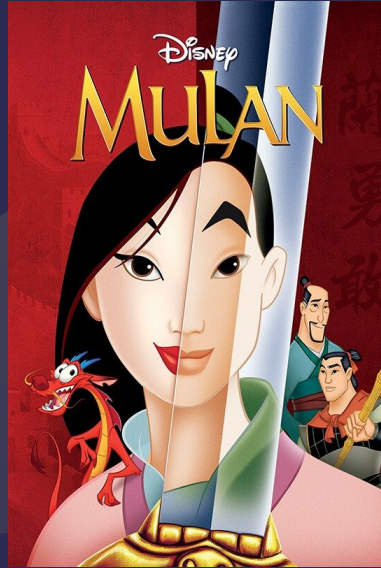
Please use this form to send us
any feedback or suggestions
you might have!



03

Movie Time!

Movie: **Mulan**



Thank you!

Have a wonderful holiday!

amsaucmerced.com

[@amsa.ucmerced](https://twitter.com/amsa.ucmerced)

Any questions?

We will see you next semester!



SIGN IN

