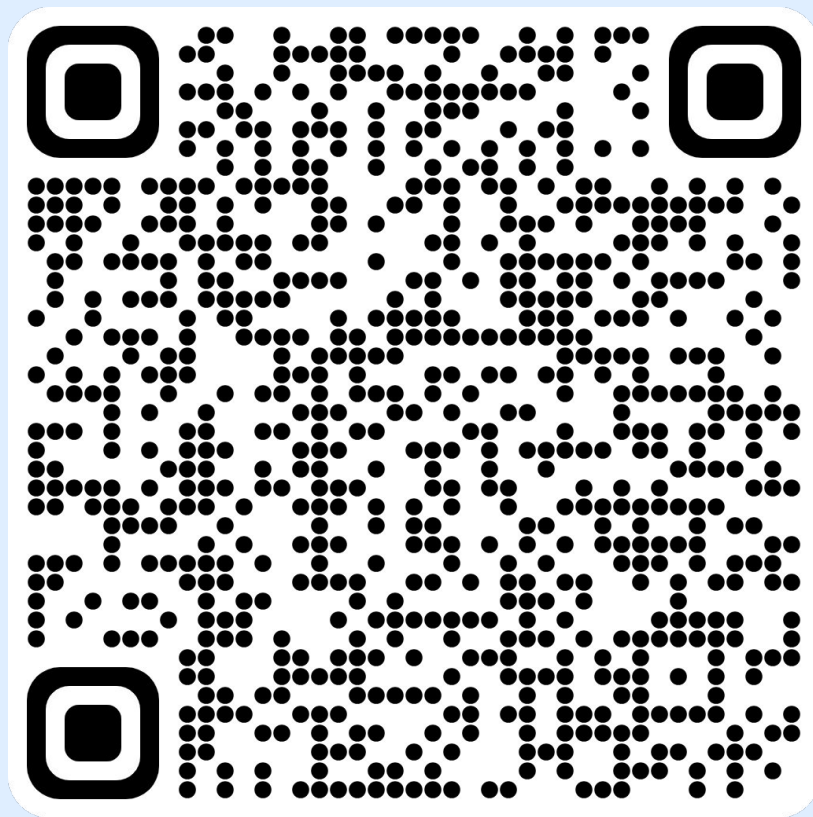


# SIGN IN



AMSA at UC Merced presents

# Applications & Elections

Thursday, March 7th, 2024 | 6:30 pm COB 105



# Agenda

01

**Announcements**

02

**MCAT Q/ Spotlight**

03

**Board Elections**

04

**Applications**

05

**Conclusion**



01

# Announcements

# Panda Express Fundraiser

## Panda Express Fundraiser

→ 20% of event sales will be donated to our chapter

## When:

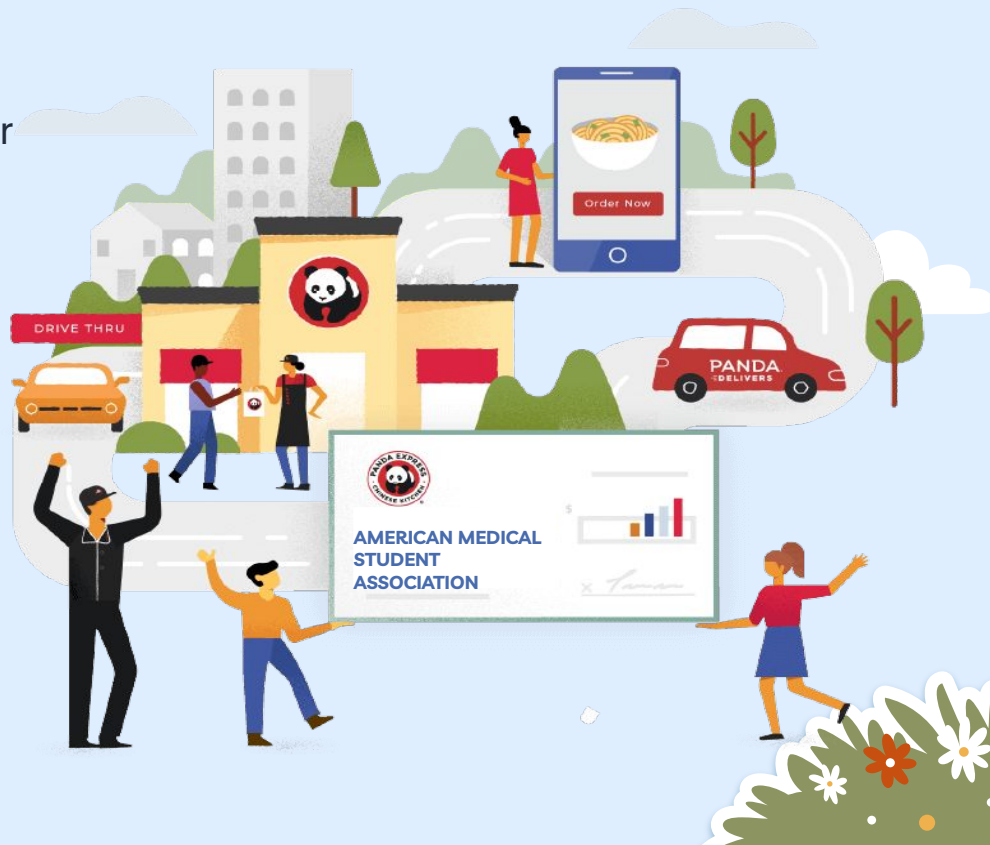
Thursday, March 14th, 2024  
Between 9:30 AM to 10:00 PM

## Where:

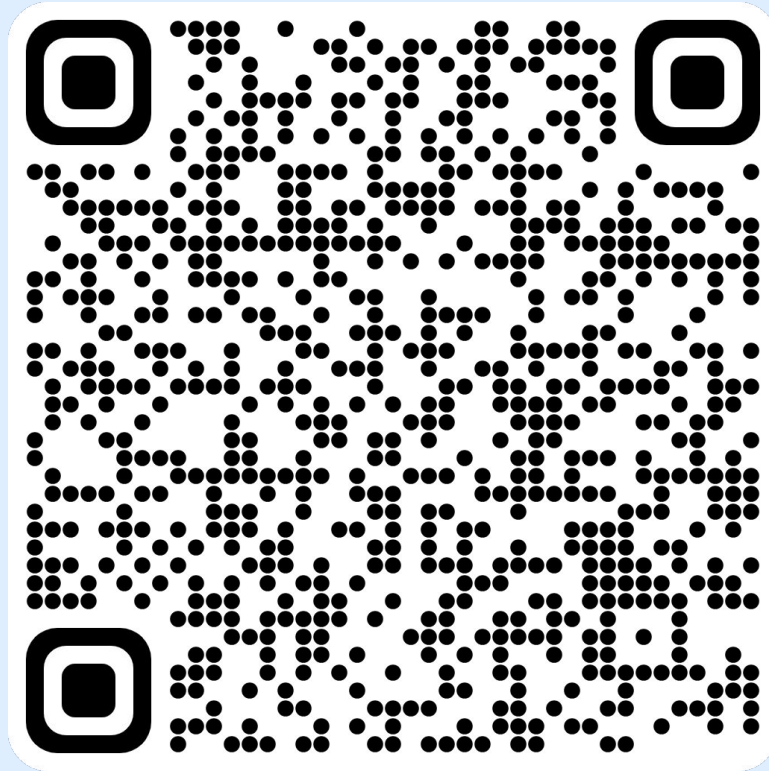
165 E. Yosemite Ave. Merced CA 95340

## How:

→ In person: show flyer on your phone  
→ Online: use fundraiser code 369699

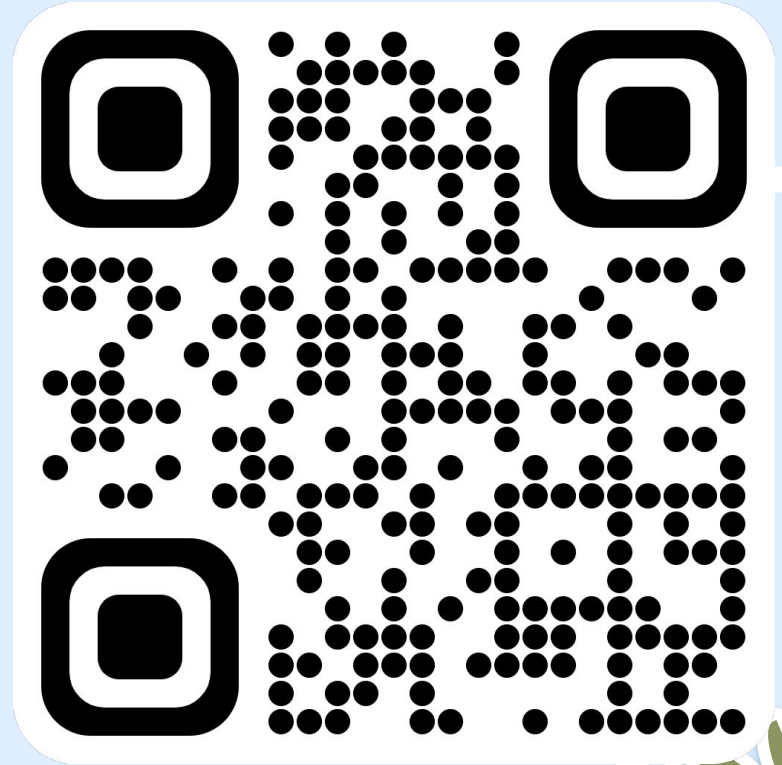


# Fundraiser Flyer Link



# Discord Server

Please join our new Discord server to get to know fellow members outside of meetings and get updates on events and opportunities!



# AAMC Medical School Virtual Fair

Use this opportunity to connect with medical schools at the virtual fair!

**Discover Your Best-Fit Schools:** Explore the diverse range of medical schools and engage in real-time conversation with representatives.

**Learn Admissions Strategies:** Hear expert advice about knowing when you're ready to apply, tackling the MCAT® Exam with confidence, and preparing for interviews.

## April 10-12, 2024

- Wednesday, April 10: Live information sessions from 11am - 4pm ET
- Thursday, April 11: Chat with medical schools from 11am - 7pm ET
- Friday, April 12: Post Baccalaureate program fair: 11am - 5pm ET



Register here





02

## MCAT Q/Spotlight



# Question

A woman is referred for genetic counseling when she has a maternal uncle (her mother's brother) and has two brothers who all have non-specific X-linked mental impairment. To determine if she is a carrier or not, there are no diagnostic tests available. Which of the following statements is TRUE?

- A. She has a 25% chance of being a carrier, according to the odds.
- B. There is a 50% chance that this woman's maternal grandmother carries the gene.
- C. This means that the likelihood of her next son developing the condition or her next daughter developing the condition is one in five.
- D. The woman already has two sons who are unaffected. Bayes' theorem can be used to determine that she is a carrier with a 1 in 5 probability.

# Answer

D. The woman already has two sons who are unaffected. Bayes' theorem can be used to determine that she is a carrier with a 1 in 5 probability.

# Spotlight

## Charles R. Drew University of Medicine and Science

- a private university in Willowbrook, California, focused on health sciences
- focus on education, training, treatment and care in cancer, diabetes, cardiometabolic, disease, and HIV/AIDS

To be eligible, applicants must meet several criteria:

- Have a bachelor's degree from an accredited college or university in the US or Canada
- MCAT(Average score of 498)
- Letter of Recommendations Required

Coursework:

- Applicants must have completed one year of college Biology, two years of college Organic Chemistry with laboratory, one year of English Composition or Literature, one year of college Physics with laboratory components, and one year of college Mathematics, including at least one course in Calculus and Statistics

**Tuition: \$18,800**

**GPA: 3.0**

**Acceptance Rate: 90%**



# Spotlight

## NYU Grossman School of Medicine:

- NYU Grossman School of Medicine is proud to have trained as well as fostered the innovations of thousands of physicians and scientists who have helped shape the course of medical history.

To be eligible, applicants must meet several criteria:

- Have a bachelor's degree from an accredited college or university in the US or Canada
- MCAT(Average score of 523)

Letter of Evaluation

- One from a premedical committee appraisal (preferred)
- Or two letters from professors who taught you in courses (at least one in science).

Coursework:

- Inorganic chemistry, organic chemistry, and biochemistry with lab
- General biology with lab
- General physics with lab
- Statistics
- Genetics
- English

**Tuition: \$0 (Once enrolled the student will be awarded a Full-Tuition Scholarship)**

**GPA: 3.9**

**Acceptance Rate: 3%**



03

## Board Elections



# How to Apply

All positions are open for applications for the year 2024-2025! To start your application, complete the application form and send any supplemental documents to [amsaucm.president@gmail.com](mailto:amsaucm.president@gmail.com).

After your application/documents have been reviewed, an interview with a board member will be scheduled and you will present your 1-2 minute speech on 4/25/24!

# Position Responsibilities

## President

- Oversee all club tasks
- Advocate for the club to the University
- Make sure everything's running smoothly

## VP of Membership

- Send weekly emails with updates/information for members
- Collaborate with other board members to create presentation slides

## VP of Communication

- social media
- communication with other board members about potential events



# Position Responsibilities

## VP of Finance

- Manage cash box/funds for the club
- Deposit checks
- Set up fundraisers

## Director of Events

- Collaborate with other board members to create events

## Director of Outreach

- Look out for volunteer/engagement opportunities
- Outreach to opportunities

## Director of Education

- MCAT Question Of The Day
- Medical School Spotlight
- Nursing School Spotlight
- PA School Spotlight

# Application Form

Use this form to apply for up to three positions! Application forms are due March 24th, 2024 and we will be in touch after reviewing your responses!

Please feel free to reach out to us via social media/email or raise your hand to ask us any questions.



# Albert Einstein College of Medicine

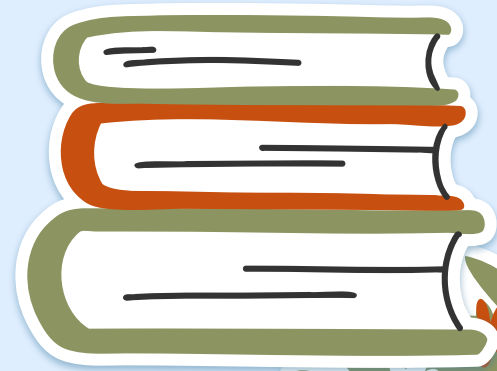
The Albert Einstein College of Medicine has announced free tuition for all medical school students!

- The school “received a transformational gift from Ruth L. Gottesman, Ed.D... the largest made to any medical school in the country – will ensure that no student at Einstein will have to pay tuition again.”
- Starting August 2024, the Albert Einstein College of Medicine will be tuition-free and current students will be reimbursed their spring semester tuition dues.

“Montefiore’s Albert Einstein College of Medicine Announces Free Tuition in Perpetuity for All Medical School Students | Albert Einstein College of Medicine.” Albert Einstein College of Medicine, [www.einsteinmed.edu/news/15163/montefiores-albert-einstein-college-of-medicine-announces-free-tuition-in-perpetuity-for-all-medical-school-students](http://www.einsteinmed.edu/news/15163/montefiores-albert-einstein-college-of-medicine-announces-free-tuition-in-perpetuity-for-all-medical-school-students)

**04**

# **Medical School Applications**



# Averages

**MCAT:** 511.9 as of 2021-2022

Ideally, earn the highest possible score in the least amount of attempts to be a more competitive applicant.

**GPA:** 3.77 (Non-science GPA: 3.85) as of 2022-2023

Three categories on the AMCAS:

1. Overall GPA
2. BCPM (biology, chemistry, physics, math) GPA
3. Non-science GPA

Most important factors in application are GPA and MCAT score– after qualifying these elements, other factors in application will be considered.

"Medical School Average GPA and MCAT, Admissions Statistics and Acceptance Rates (2023) | MedEdits."

MedEdits, 26 Jan. 2024, [mededits.com/medical-school-admissions/statistics](https://mededits.com/medical-school-admissions/statistics).

# The MCAT

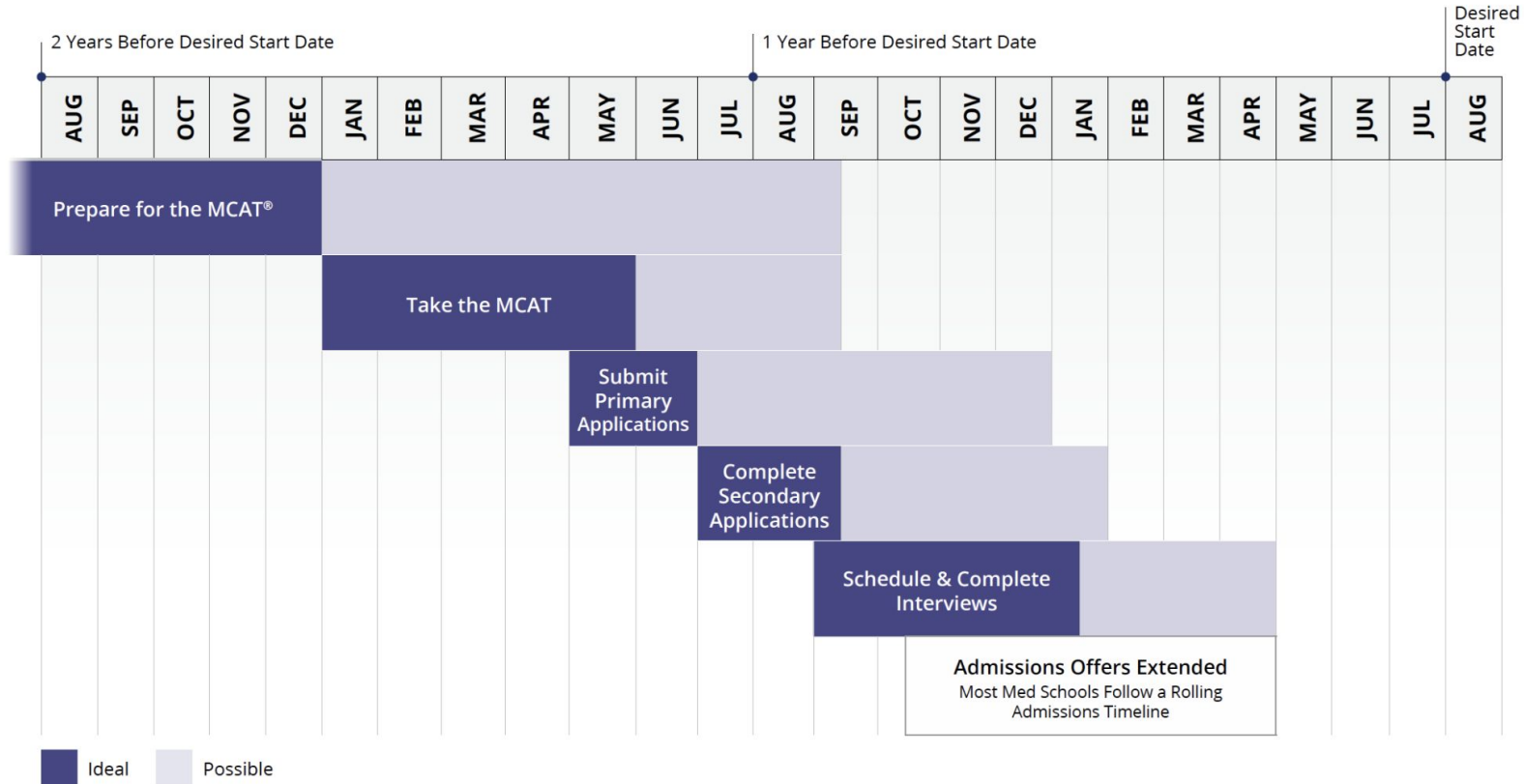
- Eight-hour test
- Four sections:
  - Biology
  - Chemistry/Physics
  - Psychology/Sociology
  - Reading Comprehension (CARS)
- Grade scale: 472-528
- Recommended studying for **minimum** of 4 months

# Medical School Applications

## Three Phases:

1. Primary Applications
  - a. AMCAS (MD programs) or AACOMAS (DO programs)
  - b. Personal statement (~1.5 page narrative essay)
    - i. Write about any topic– *how* you write the essay matters most
  - c. Send application to undershoot (lower average stats), target (similar average stats), and reach schools (higher average stats)
2. Secondary Applications
  - a. Essay prompts such as challenges, why you want to attend, etc.
  - b. Submit within two weeks of receiving the application
3. Interviews
  - a. Traditional
    - i. Typical interview questions like “Tell me about yourself,” “What is your biggest weakness?”
  - b. Multiple Mini Interviews (MMI)

# Medical School Admissions Timeline





# Thanks!

**Do you have any questions?**

amsaucmerced.com

@amsa.ucmerced

**Next Meeting: Thursday, March 21st  
2024 @ 6:30 pm COB 105**

# SIGN IN

